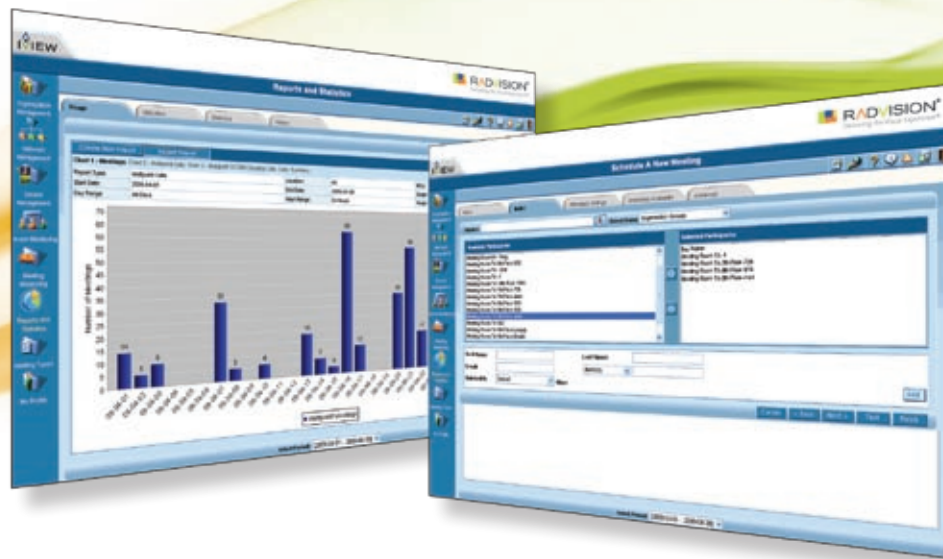


# iVIEW Suite



Sophisticated Reports and Statistical Tools



## Unified Central Management

Management of a diverse, distributed video conferencing network including all SCOPIA generations and products. Ongoing expansion of endpoint management now including RADVISION SCOPIA XT1000, SCOPIA VC240, Polycom HDX/VSX, Tandberg MXP and Sony endpoints.



## Multi-Vendor Corporate Address Book

Unique multi-vendor standards-based solution for a centralized corporate video conferencing directory enables system administrators to easily maintain endpoint video address books from a single point and distribute them to all types of video conferencing systems in the network.



## Creates "Virtual MCU"

Patented architecture approach enables high scale, distributed video conferencing deployments. Simple conference entry through one number regardless of location with dynamic and transparent conference creation across multiple MCUs.



## Works the Way You Work

Integrated with Microsoft Office or IBM Lotus Notes in your enterprise. Utilize your existing Microsoft Active Directory and IBM Lotus Domino infrastructure.



## Manage Access & Costs with Detailed Reports

Network insight through simple and comprehensive visual reports to understand utilization, view trends, watch usage growth, see the real requirements and justify the investments. Detailed provisioning and access control privileges including bandwidth, recording, maximum participants and more. Real time monitoring to instantly know use or abuse of the solution.



Virtual MCU Enables High Scale, Distributed Video Conferencing Deployments

## iVIEW (SCOPIA Management) Features

### Scheduling & On-Demand Conferencing

- Web-based intuitive interface
- Scheduled and ad-hoc conference support
- Microsoft Outlook & IBM Lotus Notes integration for scheduling
- Allow any type of endpoint to connect to the same conference: H.323, SIP, ISDN, 3G Mobile, POTS phone
- Customized personal virtual room for ad hoc or scheduled meetings
- Video resource reservations (MCU, Gateway, Gatekeeper)
- Geographical scheduling of video resources and bandwidth based on network topology
- Least cost routing to reduce ISDN call costs
- Checks MCU, users and endpoints for resource availability
- Automatic invite of endpoints (Dial-out)
- Recurring meetings
- Email notifications to meeting participants with individual information
- Personal address book to easily retrieve your favorite contacts

### Endpoint Management

- Centralized access to gather system information from a single point
- Monitoring to continuously check status and report problems
- Remotely maintain systems and perform operations – upgrades, configurations, resets
- Centralized directory – distribute address books to endpoints or function as corporate directory server

### SCOPIA® Desktop Integration

- Management and control of desktop to desktop / desktop to room system conferencing

### Comprehensive Multiparty Meeting Control

- Creates simplified dial plan and system accessibility by providing a single call-in number for the entire deployment
- View and control meeting participants
- Invite additional participants
- Change screen layout
- Mute and un-mute participants
- Extend or terminate the conference
- Seamlessly manage cascaded conferences
- Intuitive lecture mode control

### Reports and Statistics

- Graphical display of infrastructure usage & utilization (MCU, GW, SCOPIA Desktop servers and endpoints)

- Graphical display of multipoint statistics: average call duration and number of participants
- Graphical display of usage per virtual room
- Detailed call records on screen or in xl format
- Executive summary reports for administrators in PDF format

### Enhanced User Provisioning

- Detailed provisioning and access control privileges by user and group for: Bandwidth • Recording • Maximum participants

### Administration

- CDRs for billing purposes
- Organizational User Management
- Organizational Meeting Management

### SIP & H.323 Integration

- SIP PBX & H.323 support for third party application integration

### Language Support

Administrator (Network Manager):

- English • Chinese (Simplified) • Chinese (Traditional)
- Japanese • Korean

User (Resource Manager & Scheduler):

- English • Chinese (Simplified) • Chinese (Traditional)
- French • German • Italian • Japanese • Korean
- Portuguese • Russian • Spanish

### System Requirements

#### Server

- (for iVIEW Suite with internal gatekeeper and standalone iVIEW Suite)
- Pentium 4, 2 GHz processor, 2 GB RAM, 20 GB hard disk
- Windows® 2000, 2003 or 2008 Server

#### Web Client

- Windows® 7, Vista, 2000, 2003 or XP
- Microsoft Internet Explorer 6.0 or higher

#### IBM Lotus Notes add-on

- Client: IBM Lotus Notes 7.0/8.0/8.5/8.5.1 on Windows XP or Windows Server 2003
- Server: IBM Lotus Domino 7.0/8.0/8.5 on Windows Server 2003 or Redhat Linux 4.0

#### Microsoft Outlook add-on

- Server: Microsoft Exchange 2000/2003/2007/2010
- Client: Microsoft Outlook 2000 SP3/XP/2003/2007/2010

## About RADVISION

RADVISION (Nasdaq: RVSN) is the industry's leading provider of market-proven products and technologies for unified visual communications over IP and 3G networks. With its complete set of standards-based video communications solutions and developer toolkits for voice, video, data and wireless communications, RADVISION is driving the unified communications evolution by combining the power of video, voice, data and wireless – for high definition video conferencing systems, innovative converged mobile services, and highly scalable video-enabled desktop platforms on IP, 3G and emerging next-generation networks. For more information about RADVISION, visit [www.radvision.com](http://www.radvision.com)

USA/Americas  
T +1 201 689 6300  
F +1 201 689 6301  
[infoUSA@radvision.com](mailto:infoUSA@radvision.com)

EMEA  
T +44 20 3178 8685  
F +44 20 3178 5717  
[infoUK@radvision.com](mailto:infoUK@radvision.com)

APAC  
T +852 3472 4388  
F +852 2801 4071  
[infoAPAC@radvision.com](mailto:infoAPAC@radvision.com)