



SURA Coastal Ocean Observing
and Prediction (SCOOP) Program

SURA Coastal Ocean Observing and Prediction (SCOOP) Program

***Guy Almes <galmes@tamu.edu>
Texas A&M University***

(using slides from several SCOOP partners)



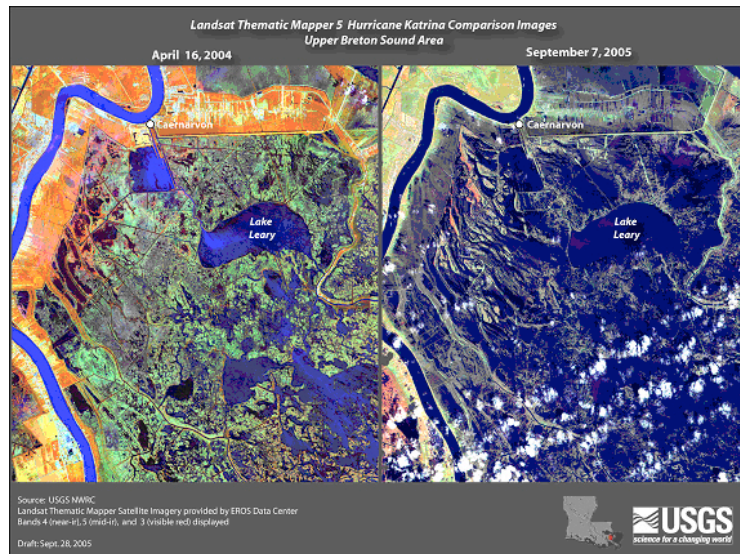
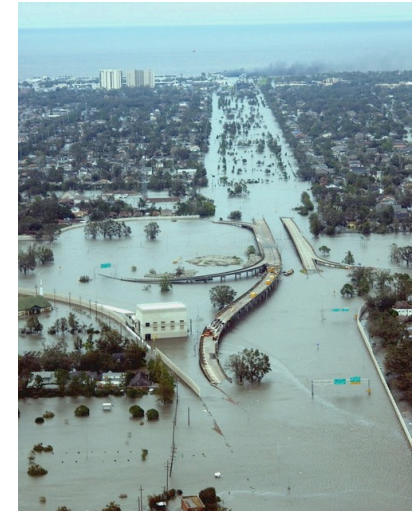


The Cost of Hurricane Katrina in 2005

\$120 B in Property Damage



About 1836 Lives Lost

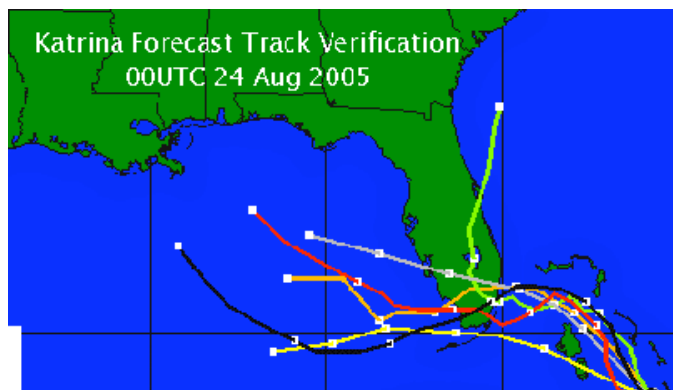


Katrina & Rita together caused about 570 (km)² of land loss in an already fragile ecosystem

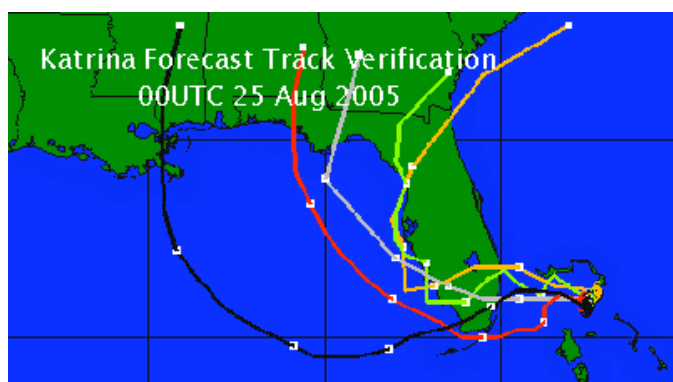


50% of New Orleans population displaced

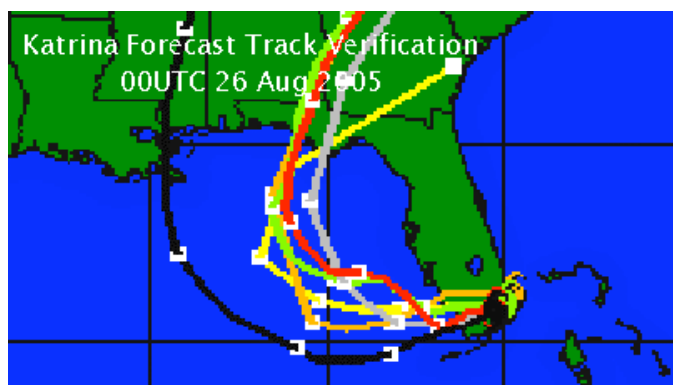
The Scientific Issue



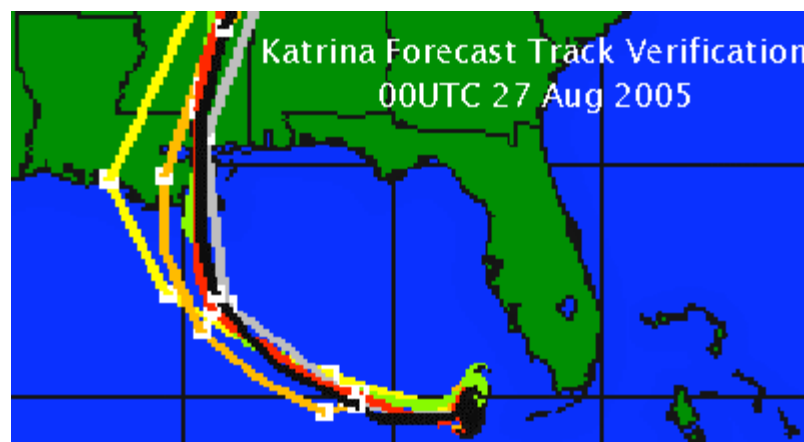
5



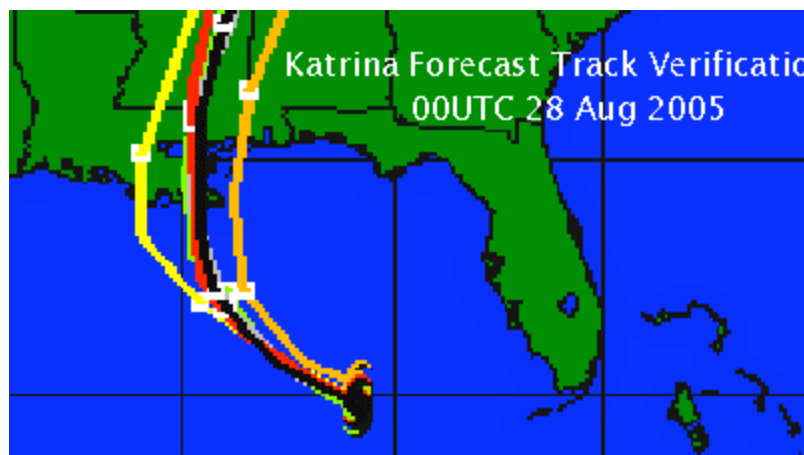
4



3



2



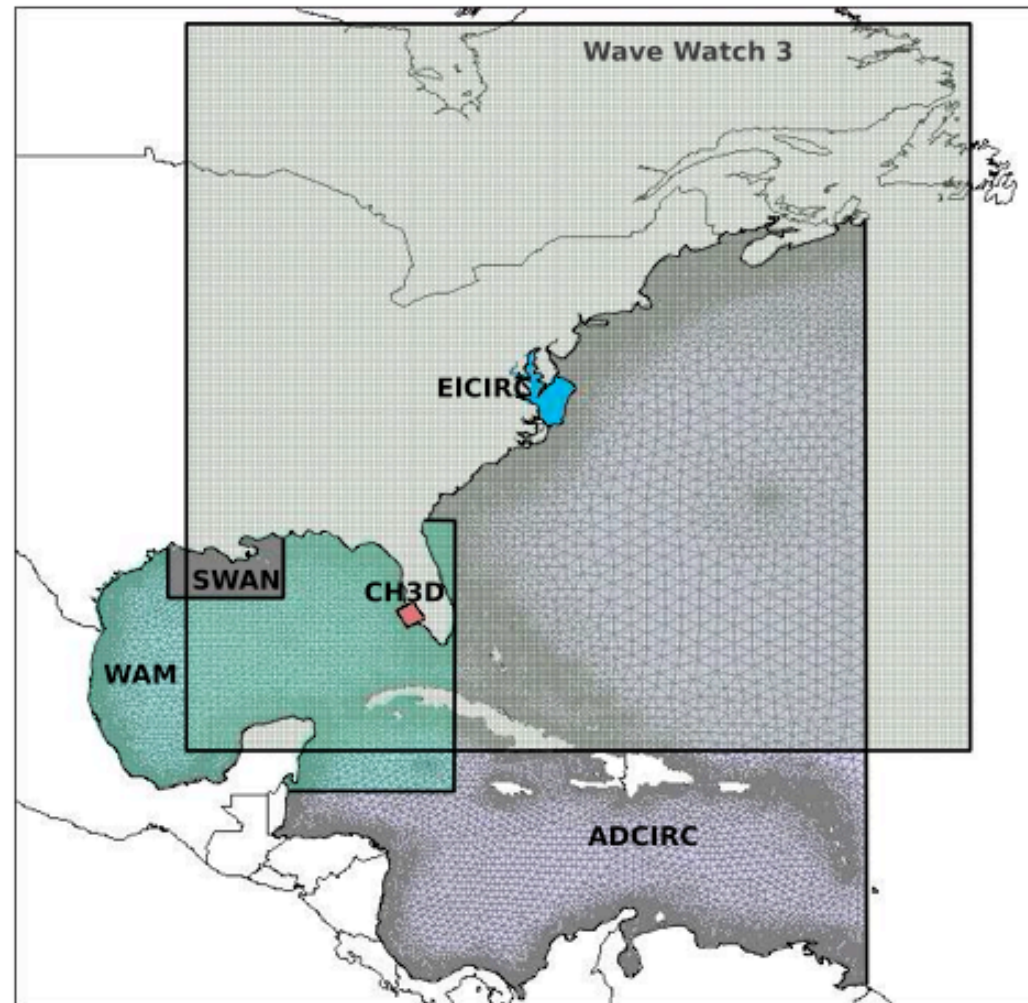
1

Ensemble of Numerical Grids

SCOOP runs a variety of coastal wave, surge, and water level models along the Atlantic and Gulf Coasts

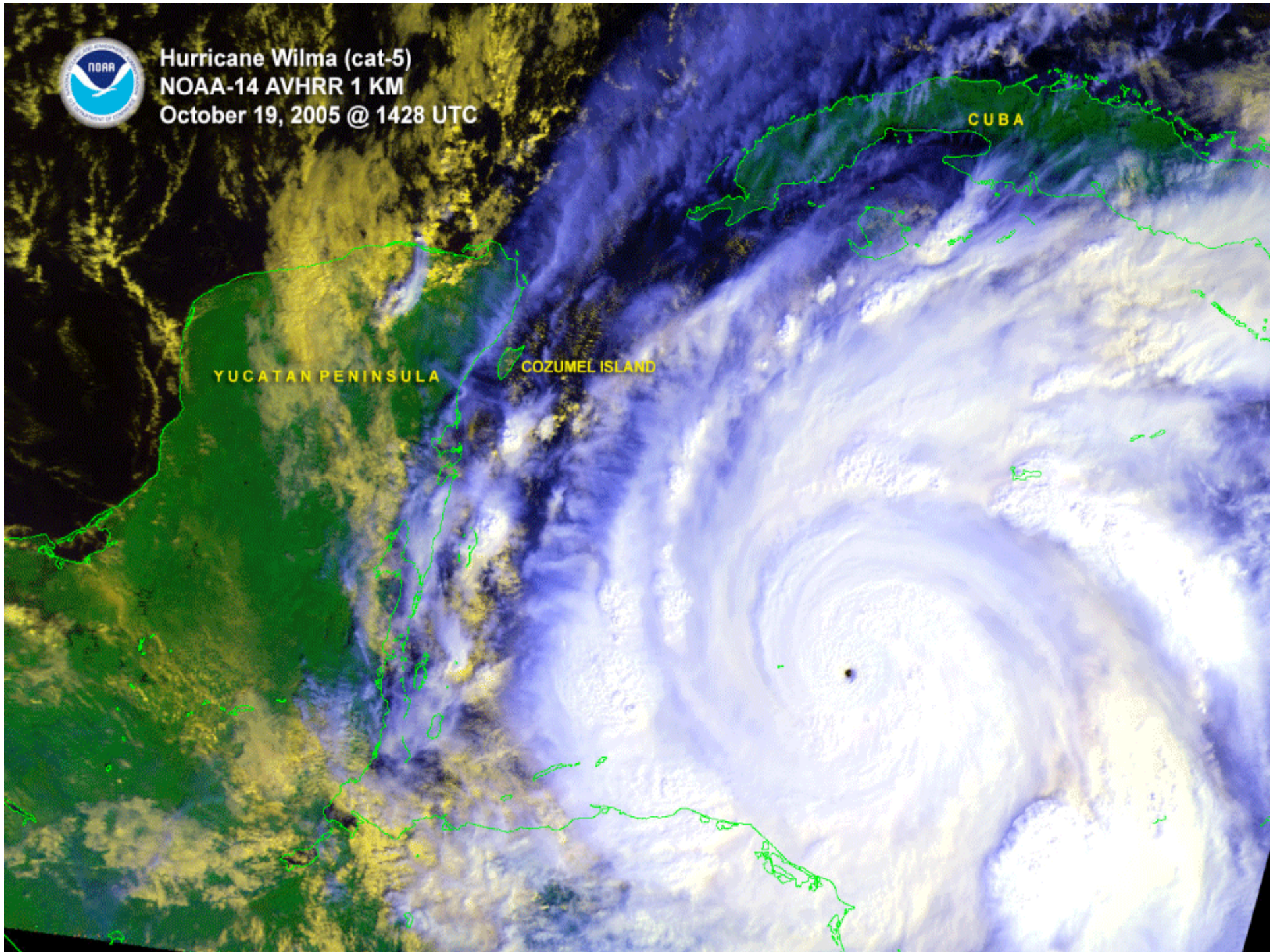
Note: Hurricanes do not respect national boundaries!

Do hurricanes ever come to Mexico?





Hurricane Wilma (cat-5)
NOAA-14 AVHRR 1 KM
October 19, 2005 @ 1428 UTC



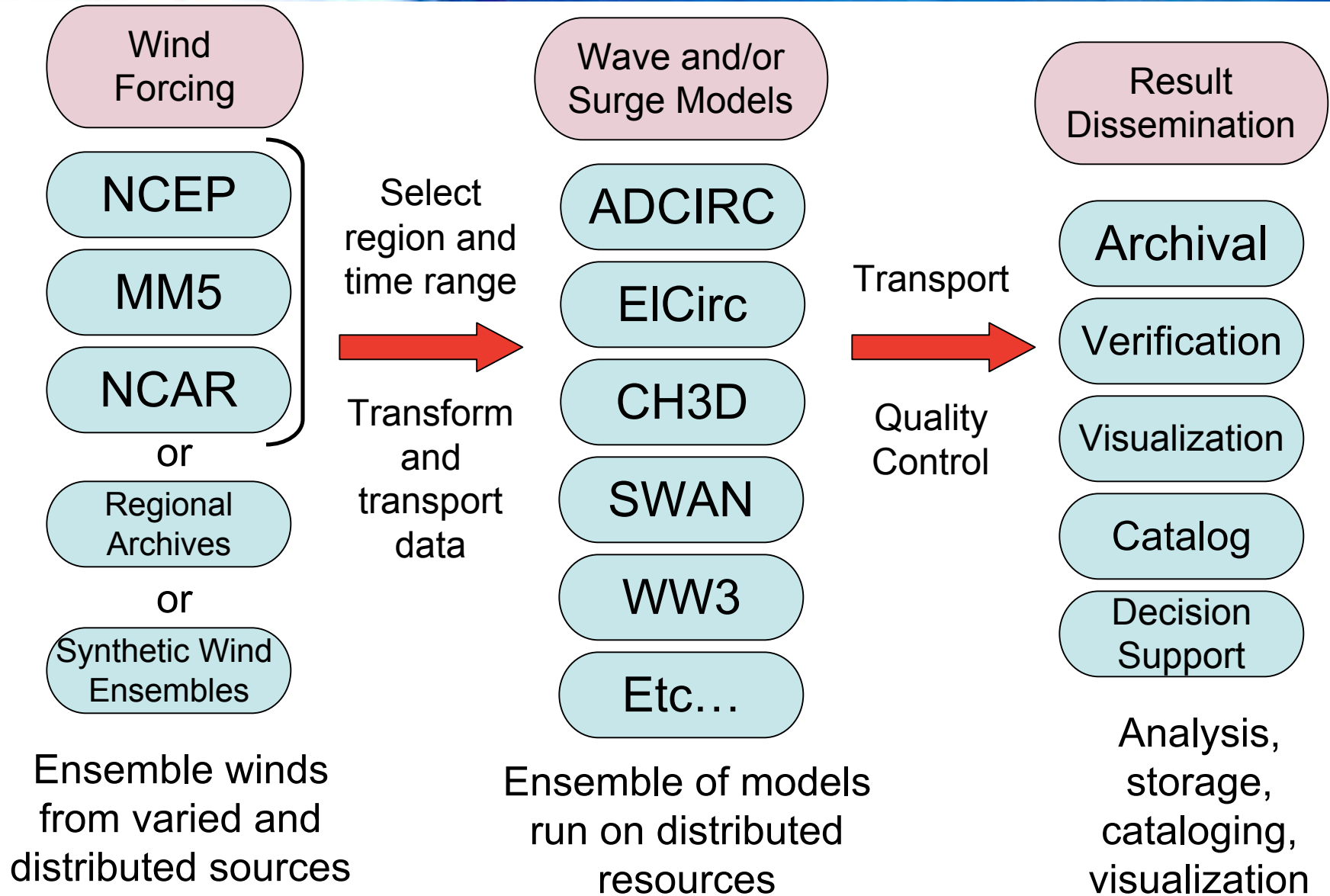
YUCATAN PENINSULA

COZUMEL ISLAND

CUBA

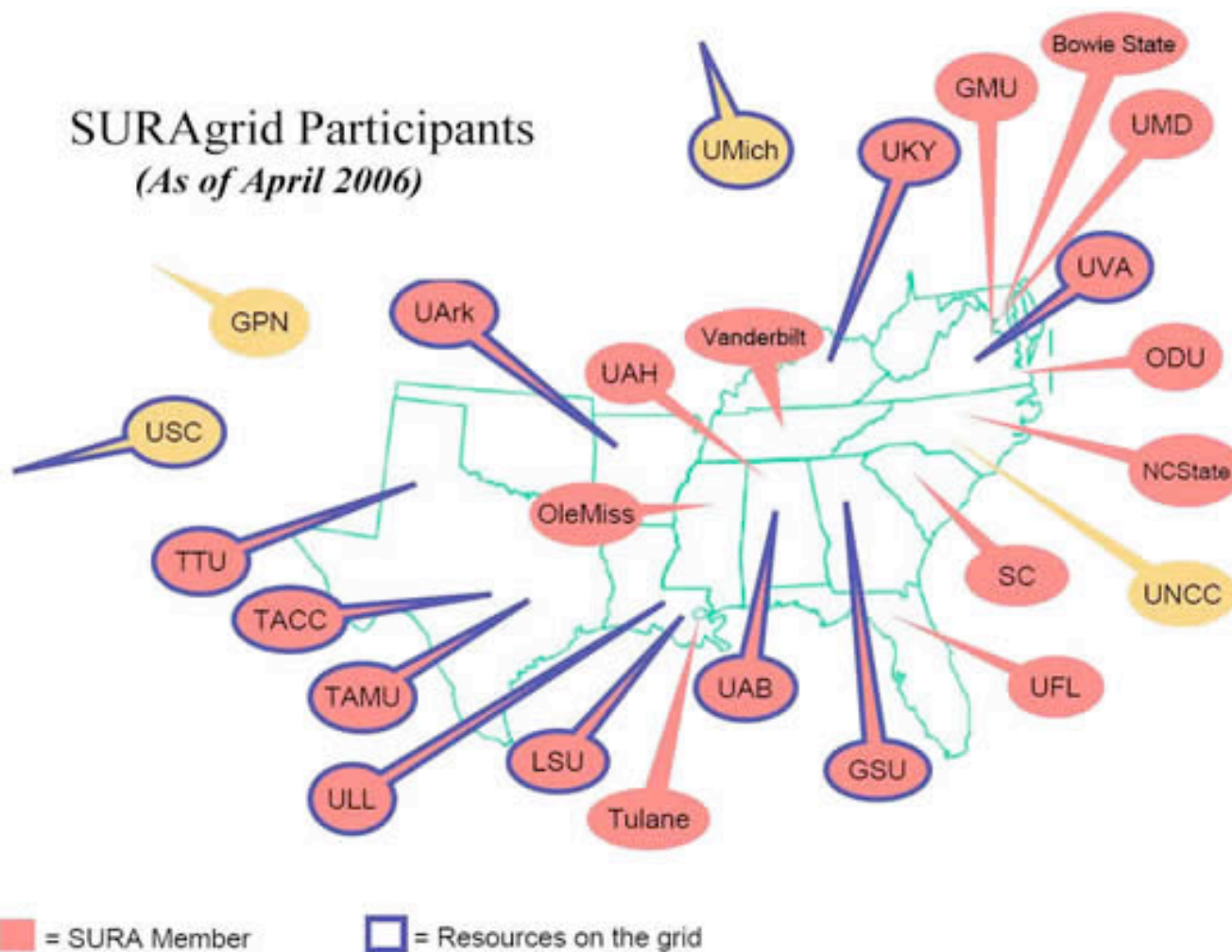


SURA Coastal Ocean Observing and Prediction (SCOOP) Program



SURAGrid

SURAGrid Participants
(As of April 2006)





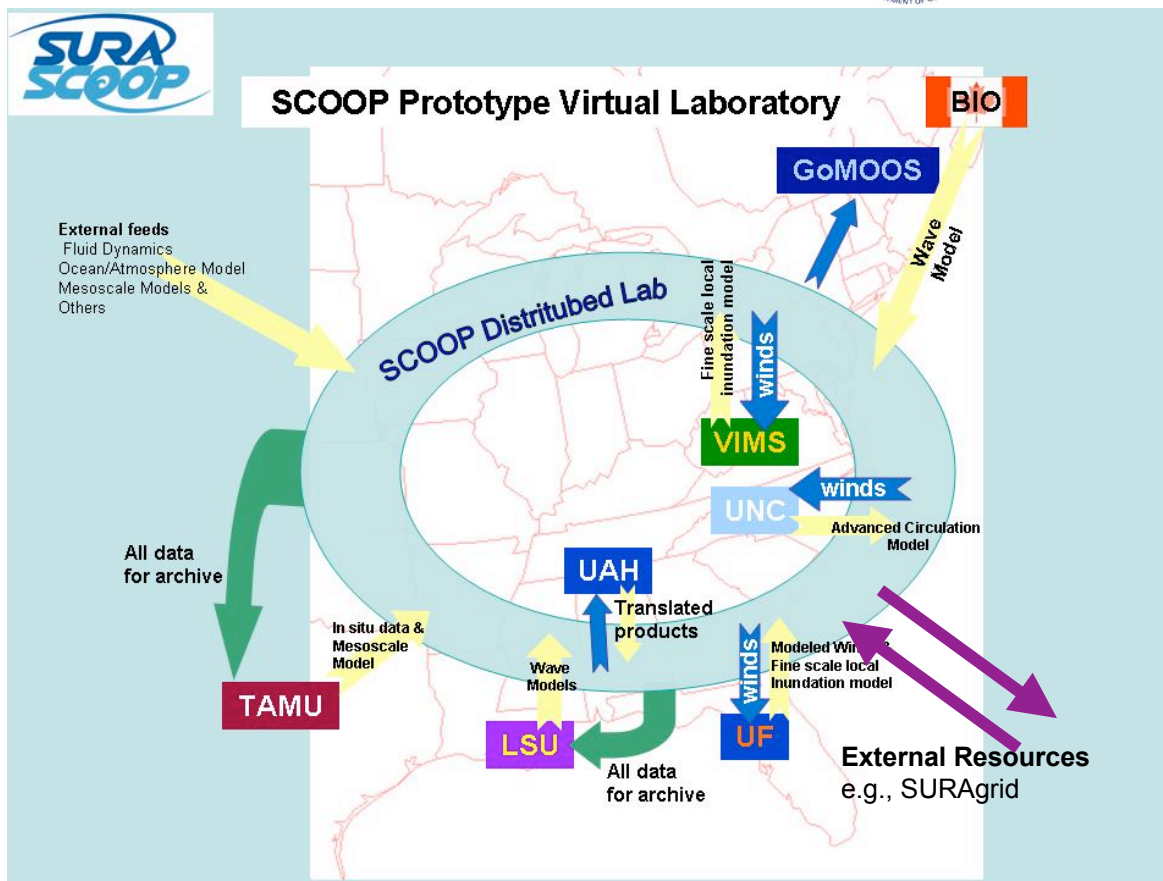
SURA Coastal Ocean Observing and Prediction (SCOOP) Program

SCOOP Prototype Distributed Laboratory

Funded by ONR & NOAA



2005-07 SCOOP Implementation Team



Bedford Institute of Oceanography



Gulf of Maine Ocean Observing System



Louisiana State University



Texas A&M



University of Alabama, Huntsville



University of Florida



University of North Carolina



Virginia Institute of Marine Science



Renaissance Computing Institute



MCNC



Southeastern Universities Research Association



Opportunities for Collaboration

- Scientific collaboration: SCOOP would benefit from collaboration with Mexican atmospheric and ocean scientists
- Societal benefit: hurricanes in the Gulf of Mexico cause grave and unpredictable harm to the people of both of our countries



SURA Coastal Ocean Observing
and Prediction (SCOOP) Program

For More Information

<http://scoop.sura.org/>

<http://www.sura.org/SURAGrid>